

**Field of use**  
Clinical trials. Diagnostics

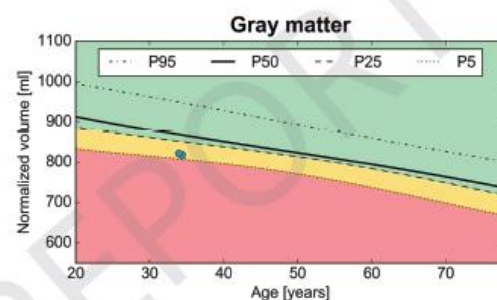
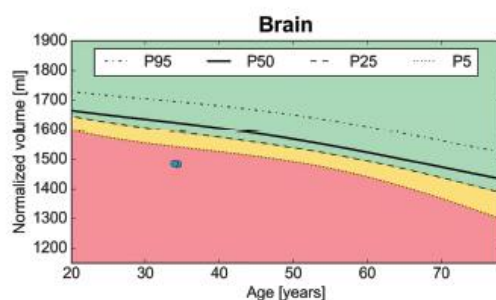
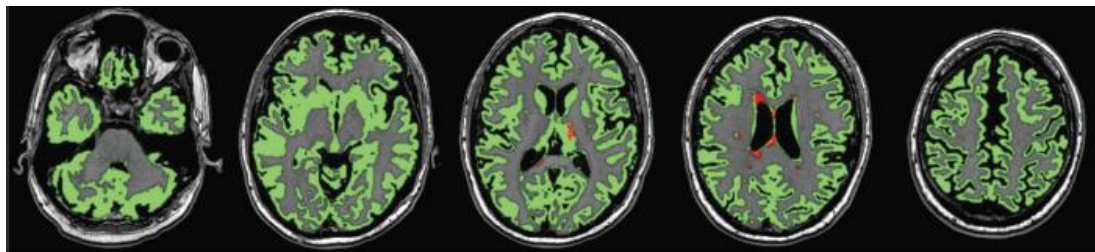
Developed by students at  
University of Ljubljana,  
Faculty of electrical  
engineering

**Contact**

E-mail:  
Ziga.Spiclin@fe.uni-lj.si

**Contact**

Knowledge Transfer Office  
Simona Rataj  
Phone: +386 1 241 85 33  
E-mail: [gospodarstvo@uni-lj.si](mailto:gospodarstvo@uni-lj.si)  
ppz.uni-lj.si



### WHAT IS MS Markers?

Quantim MS Markers is an easy-to-use online service that provides reliable and clinically useful measurements of lesion count and volume, normal brain volumes and brain and gray matter atrophy from routine clinical MR images.

For more information visit  
[www.quantim.eu](http://www.quantim.eu).

### BENEFITS

✓ **PROGNOSTIC**

Be informed about the MRI activity of MS disease in your patient – use MS Markers to get ahead of MS.

✓ **RELIABLE**

We use the best algorithm, thoroughly validated on relevant clinical images, to extract each biomarker.

✓ **EASY TO USE**

Automatically extracts biomarkers most relevant to MS and returns an easily understandable report.

### HOW IT WORKS?



**IMAGE  
UPLOAD**

Upload DICOM files to our server through secure web transfer.



**AUTOMATIC  
ANALYSIS**

Uploaded images are automatically analyzed.



**QUALITY  
CHECK**

All results are subject to manual quality control.



**REPORT  
DOWNLOAD**

Once approved by quality control, report is available for download.