

PATENTING IN IBM

—
Peter Geršak

Chief Technology Officer
IBM South East Europe



What is Intellectual Property (IP)?

Four types of Intellectual Property:

Copyright - Legal protection of the expression of an idea

- Used to protect: books, music, software, images, video, sound, ...

Trademark - Protects a product/company name or symbol.

- A device (e.g. word, phrase, logo, picture, slogan, product shape) used by a manufacturer or merchant to identify its goods, and to distinguish them from those made or sold by another; May be registered.

Trade secret - Ideas, processes, formulae, and certain lists protected by strict secrecy.

- Information used in one's business, which provides an advantage over competitors who do not know it.

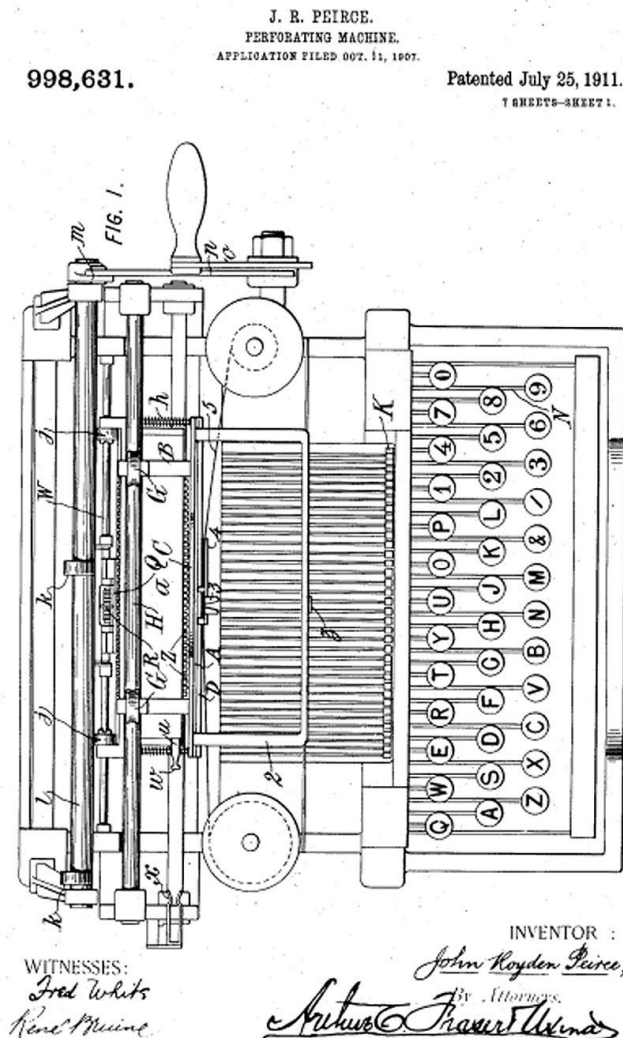
Patent - Protects the idea.

- A statutory property right conferring to an inventor for a term of years the right to exclude others from making, using, or selling a claimed invention.

This presentation will focus on **Patents**.

IBM Patenting History

- IBM has in 2018 invested more than 5 Bn. USD in research and development.
- IBM inventors received a record 9.100 patents in 2018.
- More than 1,600 patents were related to AI and 1,400 to cybersecurity.
- 26th consecutive year of IBM's U.S. patent leadership.



How IBM Uses Its Patents?

- Income
- Freedom of Action
- IBM's reputation as Technology Leader
- Patent Pledges
- Exclusivity

What Can Be Patented?

Subject matter categories:

- Articles of manufacture
- Processes/methods producing tangible results (SW generally falls under this category)
- Machines (apparatus)
- Compositions of matter
- An improvement of an invention in one of the above categories

Additional requirements:

Useful Novel Non-obvious

The Parts of a Patent

Abstract – a one paragraph description of the invention

Background – any information necessary to understand the invention, for example, the field of the invention and the general environment in which the invention operates

Summary – a brief statement of the invention

Detailed Description – a description of the invention enough detail so that someone with ordinary skill in the technical area could make and use it

Claims – the most important part of the patent; they define the boundaries of the property and are a measure of a patent's value

Drawings – show all aspects of the claimed invention

At IBM, only registered patent attorneys and patent agents — collectively referred to as “patent professionals” — prepare patent applications for submission to the patent office, with input from the inventor(s).

Patenting Process

Idea

Scan



IDT

Present

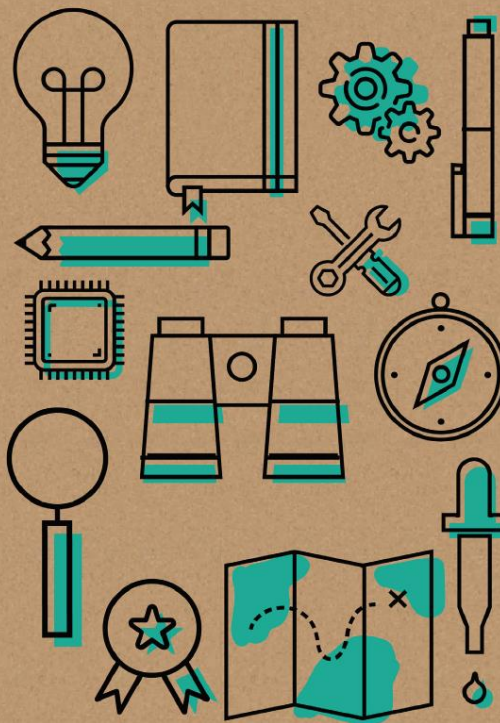


Search

Execu



Application



Aspiring Inventors


Field Guide

IBM

Awards to Inventors

Award	Dollars	Points	Misc
First File	\$1,500/Inventor	3	1st File Certificate
Subsequent File	\$750 each for 4 or less inventors \$3000 shared equally among all inventors if more than 4	3	
Publish		1	
Patent Issue	\$500 each for 4 or less inventors \$2000 shared equally among all inventors if more than 4	none	1st page copy
Plateau Award	\$1,200 for each plateau Plateau = 12 points, with minimum of 6 points from Filed Patents	none	Certificate

High quality reproduction of first page for each inventor



 US067096457B2

(12) **United States Patent**
 Litolo et al.

(16) Patent No.: **US 7,096,457 B2**
 (45) Date of Patent: **Aug. 22, 2006**

(54) **PROMOTION OF FEATURES IN REUSABLE SOFTWARE COMPONENT TYPES**

(75) Inventors: **Martin Litola, Toronto (CA); Michael Starkey, Toronto (CA)**

(73) Assignee: **International Business Machines Corporation, Armonk, NY (US)**

(*) Notice: Subject to any disclaimer, the term of this patent is extended or adjusted under 35 U.S.C. 154(b) by 717 days.

(21) Appl. No.: 10/919,341

(22) Filed: **Dec. 13, 2002**

(65) **Prior Publication Data**
 US 2003/0159131 A1 **Aug. 21, 2003**

(30) **Foreign Application Priority Data**
 Feb. 21, 2002 (CA) 2372891

(51) **Int. Cl.**
G06F 9/04 (2006.01)
G06F 1/00 (2006.01)

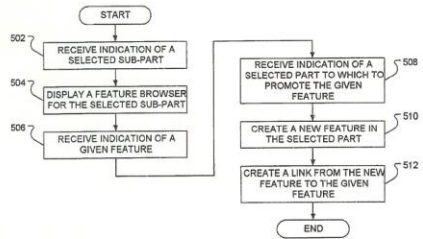
(52) **U.S. Cl.** 717/100-123;
 719/110, 315, 718/106

(58) **Field of Classification Search** 717/100-123;
 719/110, 315, 718/106
 See application file for complete search history.

(56) **References Cited**
U.S. PATENT DOCUMENTS
 4,943,912 A * 7/1990 Lark et al. 706/60

6,260,473 B1 * 7/2001 Tread et al. 717/104 6,298,475 B1 * 10/2001 Alcorn 717/118 6,578,791 B1 * 6/2003 Goshier et al. 717/107 6,601,234 B1 * 7/2003 Bowman-Amuah 717/108 6,611,844 B1 * 8/2003 Sundquist et al. 707/100 6,694,506 B1 * 3/2004 LeBlanc et al. 717/108 6,694,507 B1 * 3/2004 Arnold et al. 717/108 6,768,486 B1 * 7/2004 Scaho et al. 345/420 6,789,232 B1 * 9/2004 Isidori et al. 717/100 6,868,538 B1 * 3/2005 Nixon et al. 717/100 6,913,301 B1 * 7/2005 Hinch 707/102	OTHER PUBLICATIONS TITLE: <i>Dynamic selection and reuse of implementations in the object-oriented programming paradigm</i> , author: Al-Haddad et al., ACM, 1997.* TITLE: <i>Analyzing and measuring Reusability in Object-Oriented Design</i> , author: Price et al., ACM, 1997.* * cited by examiner Primary Examiner —Anthony Nguyen-Ba (74) Attorney, Agent, or Firm —James H. Boice; Dillon & Yudeff (57) ABSTRACT In the process of hierarchical composition of software component types, the reusability of software component type is improved through the "promotion of features". That is, a feature of an instance of a predetermined software component type may be promoted to a software component type containing instances of the predetermined software component type. The promoted feature may then be instantiated when the containing software component type is instantiated.
---	---

28 Claims, 5 Drawing Sheets



```

graph TD
    START([START]) --> 502[RECEIVE INDICATION OF A SELECTED SUB-PART]
    502 --> 504[DISPLAY A FEATURE BROWSER FOR THE SELECTED SUB-PART]
    504 --> 506[RECEIVE INDICATION OF A GIVEN FEATURE]
    506 --> 508[RECEIVE INDICATION OF A SELECTED PART TO WHICH TO PROMOTE THE GIVEN FEATURE]
    508 --> 510[CREATE A NEW FEATURE IN THE SELECTED PART]
    510 --> 512[CREATE A LINK FROM THE NEW FEATURE TO THE GIVEN FEATURE]
    512 --> END([END])
    
```


Inventors can see their patents in US Patent Office

USPTO PATENT FULL-TEXT AND IMAGE DATABASE

Home

Quick

Advanced

Pat Num

Help

Bottom

View Cart

Searching US Patent Collection...

Results of Search in US Patent Collection db for:
((Michael AND Starkey) AND "international business machines"): 35 patents.
Hits 1 through 35 out of 35

Jump To

Refine Search

Michael AND Starkey AND "international business machines"

PAT. NO.	Title
1 9.852.336	Relative positioning of a mobile computing device in a network
2 9.632.758	System and method for generating content rules for a website
3 9.576.364	Relative positioning of a mobile computing device in a network
4 9.412.000	Relative positioning of a mobile computing device in a network
5 9.110.934	System and method for delivering an integrated server administration platform
6 9.092.687	Automatically converting a sign and method for automatically reading a sign
7 8.903.745	Worldwide web registration information processing system
8 8.666.808	Media content notification via communications network
9 8.468.042	Method and apparatus for discovering and utilizing atomic services for service delivery
10 8.356.281	Method, system and program product for recording and replaying target service interaction data
11 8.245.201	Method and system for recording and replaying service interactions
12 8.214.735	Structured document processor
13 8.176.408	Modularized web provisioning
14 8.001.068	System and method for calibrating and extrapolating management-inherent complexity metrics and human-perceived complexity metrics
15 7.930.268	Workflow method, system, and data structure
16 7.865.295	Method and apparatus for discovering and utilizing atomic services for service delivery

